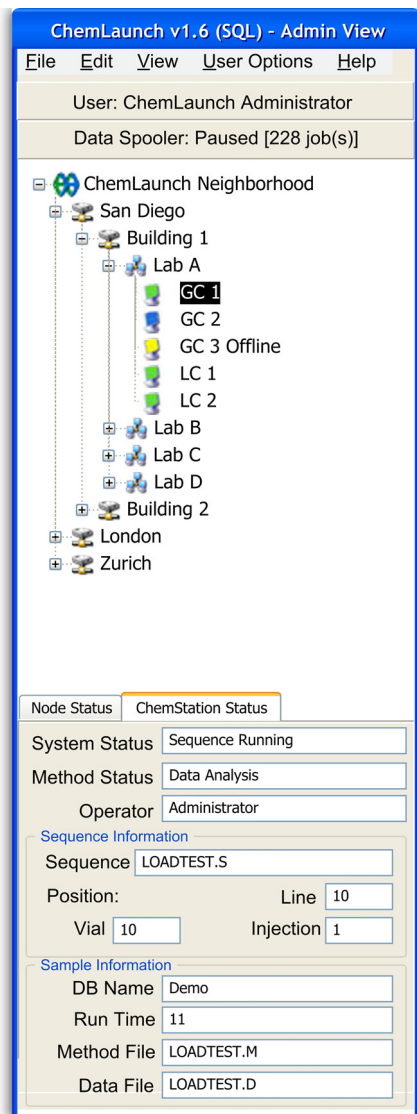




Centralized Control and Full Remote Access for Agilent ChemStation™

**ChemStation Thin Client Access:** ChemLaunch enables the ChemStation family of software to be moved from individual PC's onto a centralized thin client solution, with controlled Citrix servers; and enables secure access and full instrument control from potentially anywhere in the world.



## Significant Benefits

*ChemLaunch* enhances and accelerates your entire analysis process and delivers full control through ChemStation.

*ChemLaunch* is a robust system used by leading researchers who rely on Agilent instrumentation.

### ChemLaunch:

- Reduces compliance costs with a thin client solution.
- Saves time by allowing password protected full instrument remote control from anywhere on the LAN/WAN.
- Saves time in tracking down the run-status of the instruments across the lab, between buildings or from home.
- Saves lab space by eliminating the need for instrument PC's on the lab bench.
- Reduces IT support costs with centralized control by eliminating redundant PC software, upgrades, and maintenance and support costs.

### Additionally:

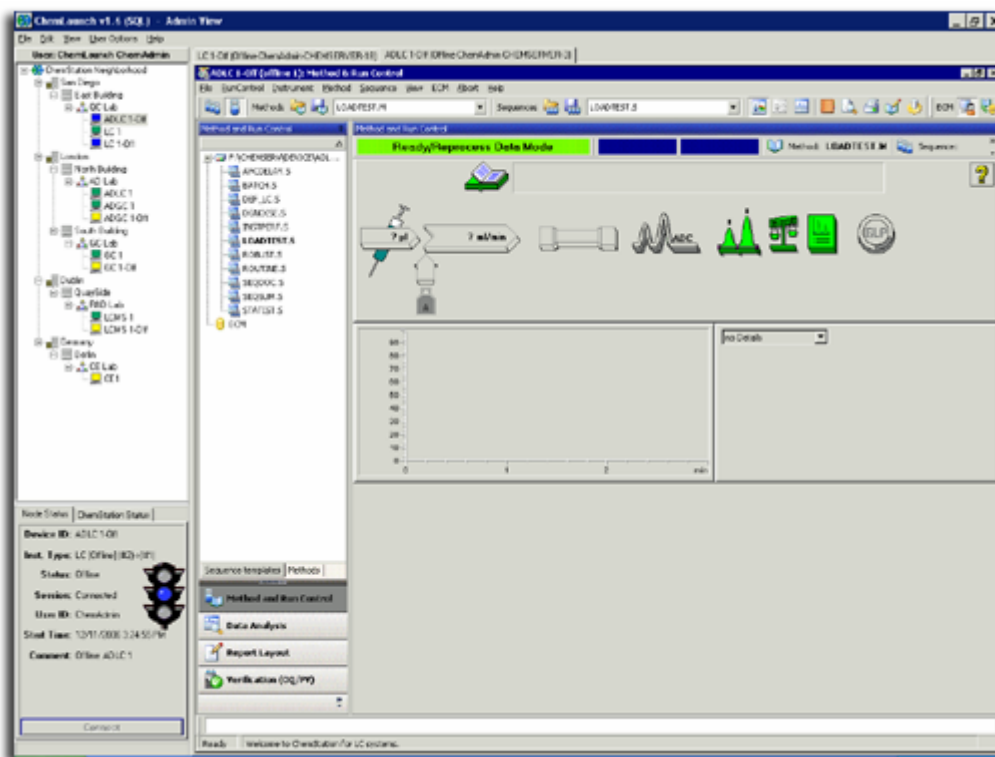
- ChemLaunch has a very short learning curve as it is built on the ChemStation platform.
- ChemLaunch's thin client architecture allows fast and affordable scalability.
- Supports Agilent ECM or ChemStore.

Accelerate Your Research and  
Empower Your Team

# Amplifying and Extending ChemStation

Your research depends on efficient use of reliable instruments. *ChemLaunch™* streamlines your work to save you time with new capabilities that deliver unmatched data access, control, and protection. *ChemLaunch* is the only solution that can give you remote access to *every feature* of Agilent ChemStation™.

*ChemLaunch* is a server-based, Citrix solution that gives you more time for creative tasks by reducing trips to the lab. With system authorization, you can use any workstation on your LAN or WAN to remotely run ChemStation. Securely monitor experiments in any lab at any site, as well as share instruments with colleagues – worldwide. *ChemLaunch* frees you from significant logistical overhead to help you maximize your progress and improve collaboration.



## Comprehensive Support

Every *ChemLaunch* implementation is based on deliberate, thoughtful planning, and exceptional service. Healex engineers and support staff ensure your *ChemLaunch* implementation is efficient and meets prescribed parameters with high security.

We provide full global support including:

- Pre-installation Assessment and Configuration
- Implementation and Testing
- Validation
- Training and Documentation
- Ongoing Technical Support

Healex Systems Limited  
USA 888.637.9997  
Europe 353 (0) 74 9321634  
info@ChemLaunch.com  
www.ChemLaunch.com  
or contact your local Agilent sales representative